

**SPS**

**Shirley  
Photographic  
Society**

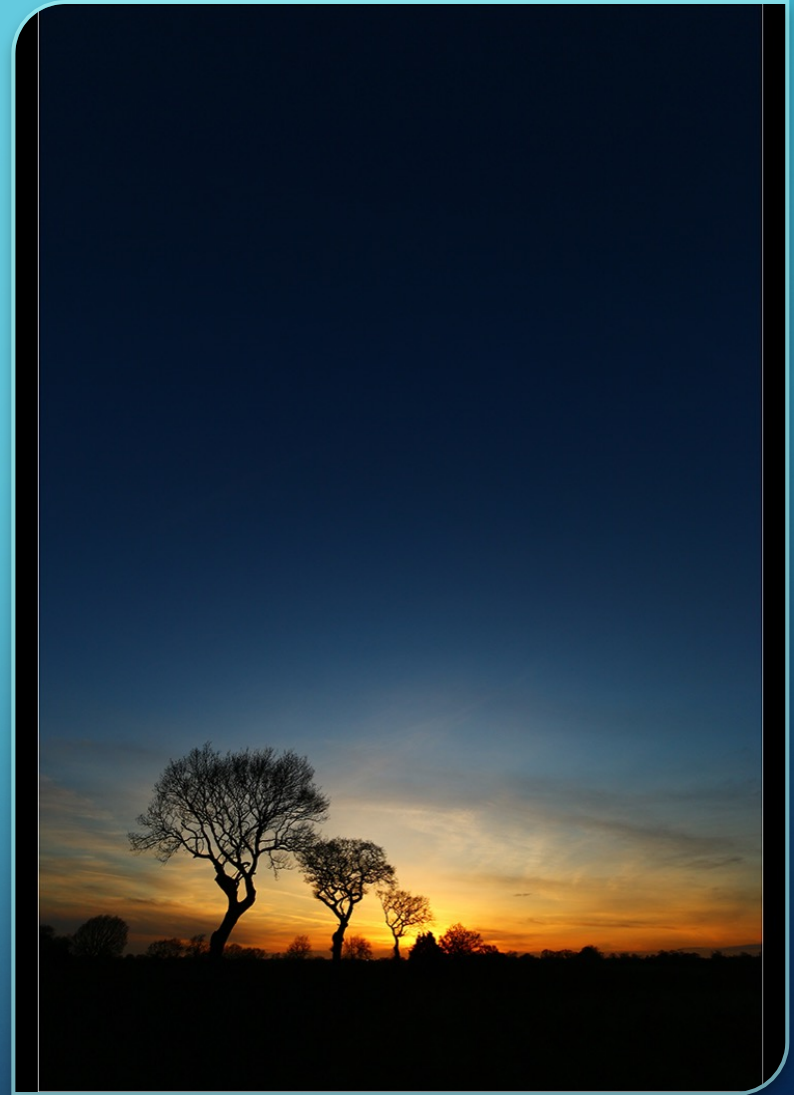


**Est. in 1937**

# COMPETITION RULES

# GENERAL RULES

- Three Groups (1, 2 , 3)
- Deadlines two weeks before the competition
- Title your images Author#Title#01.jpg
- The photography should be all your own work
- Commercial printing allowed
- Digital images 1600 x 1200 pixels
- Prints any size but must be mounted on 500mm x 400mm board





# GENERAL RULES

- Images entered twice in a season
- Exceptions (Panels, 'Fun' competitions)
- Images judged in previous years not eligible in any format
- Taken any time, except President's Assignment.
- Shots of the same subject are eligible, but must be different in some way





# GENERAL RULES





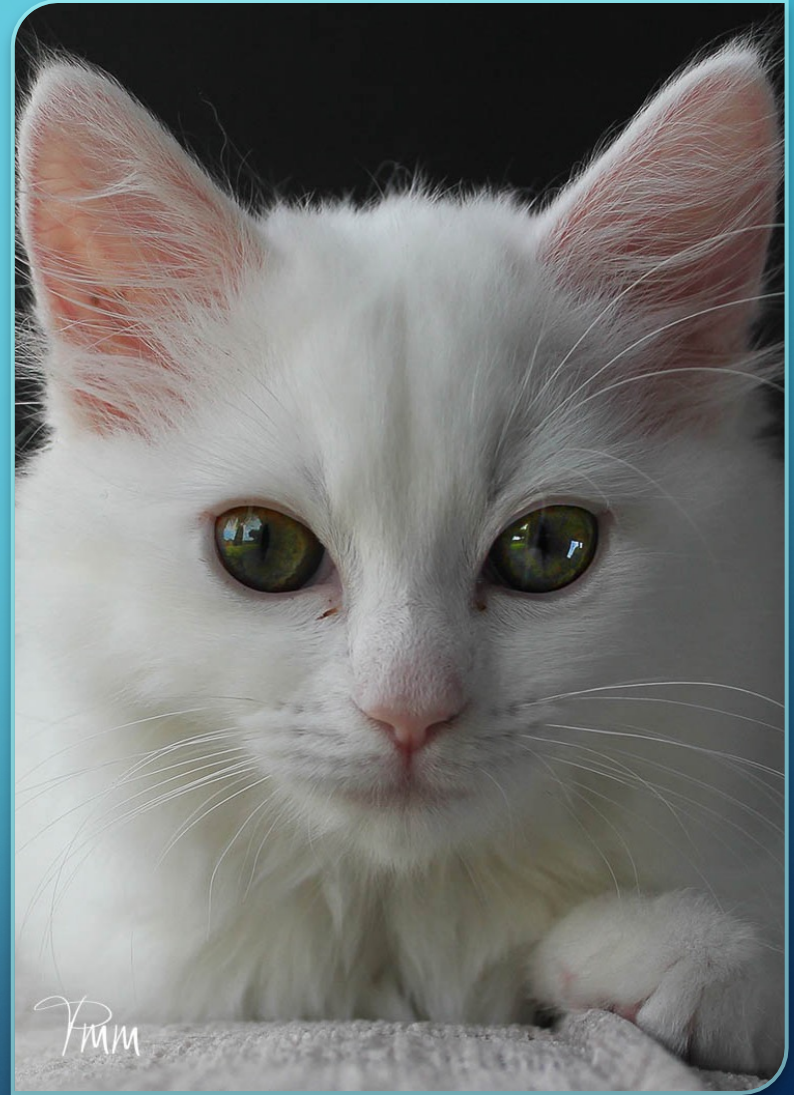
# GENERAL RULES





# SPECIFIC RULES

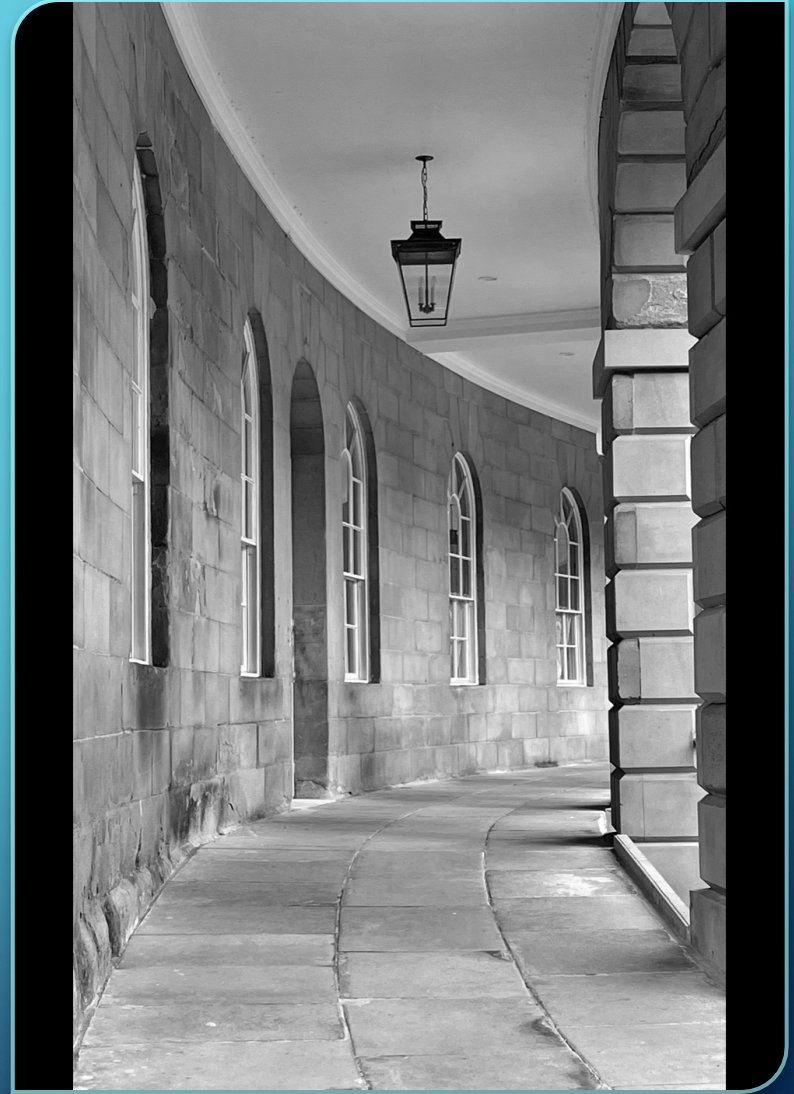
- First Print / Projected and Annual Print / Projected – open, any theme
- Landscapes
- Natural History
- President's Assignment
- Mono





# SPECIFIC RULES

- People
- Travel
- Straight-out-of-the-Camera
- Panels
- Creative
- Audio-Visual
- Christmas Knockout



# LANDSCAPES AND NATURAL HISTORY





# NATURAL HISTORY

Permitted	Not permitted
<p>Any living zoological or botanical organism free and unrestrained in a natural or adopted habitat.</p> <p>Organisms in zoos, game farms, aquariums, botanical gardens, any enclosure where the subjects are totally dependent on man for food.</p> <p>'Falconers' birds (jesses cannot be cloned out).</p> <p>Wildflowers / plants in parkland or "wild" gardens (not cultivated).</p> <p>Marine subjects and botanical subjects (including fungi and algae) taken in the wild.</p> <p>Geological formations</p> <p>Weather phenomena</p>	<p>Domestic animals.</p> <p>Mounted species.</p> <p>Cultivated plants.</p> <p>Human created hybrid plants.</p>

# PRESIDENT'S ASSIGNMENT

- Set in November
- Could be Print / DPI
- Shutter pressed in the year after the theme was announced





# PEOPLE

- Open to interpretation
- Print / DPI
- Must include at least one person!
- Colour or mono
- No restrictions on manipulation





# PEOPLE





# TRAVEL

- Express the feeling of a time and place
- Not necessarily abroad!
- Could be landscape, environmental portrait, cityscape, even nature
- Minimal manipulation
- No cloning, combining images





# TRAVEL





# TRAVEL





# STRAIGHT-OUT-OF-THE CAMERA

- No manipulation allowed
- The image resulting as the shutter was pressed
- Only manipulation allowed is to re-size to 1600 x 1200 pixels





# PANELS

- A matched set of 3 or 4 images  
(Background image does not count)
- Separate images
- Any theme, any subject
- Images used in a panel can be used again in the same/following seasons  
(then the 2 entries rule applies)





# PANELS





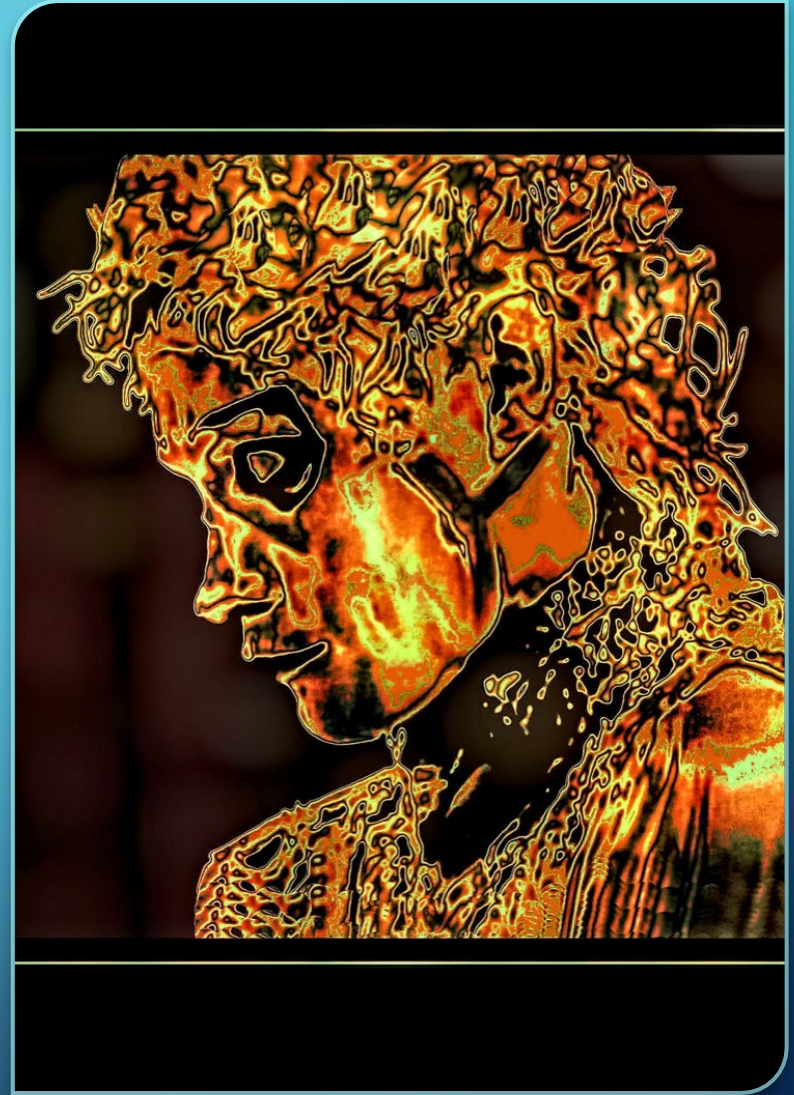
# PANELS





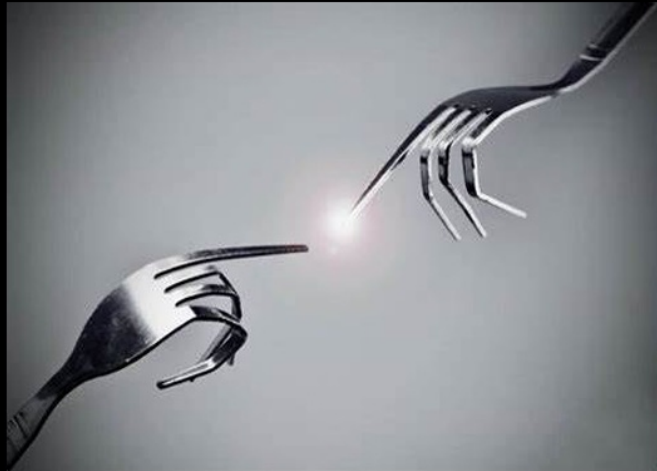
# CREATIVE

- Altered reality
- Display a change of shape, or colour or form
- Can be composites of two or more images
- All components must be the work of the Author





# CREATIVE





# AUDIO-VISUAL

- Ideally no longer than 5 minutes
- To play on a Windows PC  
(.exe, .wmv, .mp4)
- AVs should be the work of the author
- Some of the images (up to 25%) may not be the author's own work





# CHRISTMAS KNOCKOUT

- Anything goes!
- No restrictions of any kind
- Any year, theme, seen before
- Please name your images carefully:

Joe Bloggs 01.jpg, Joe Bloggs 02.jpg,  
etc

