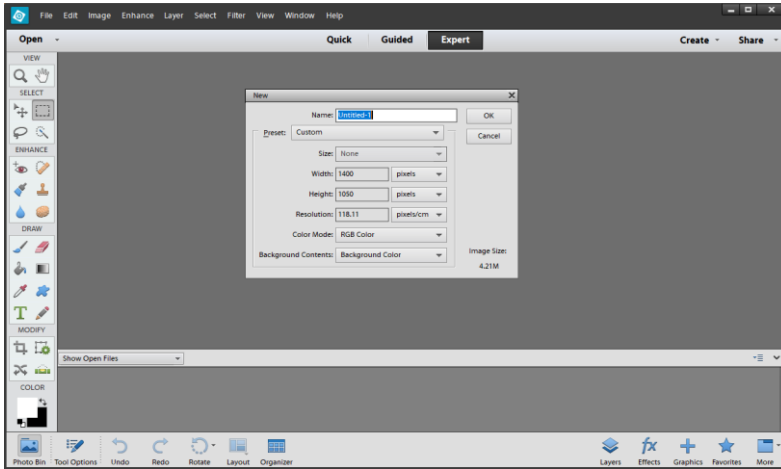


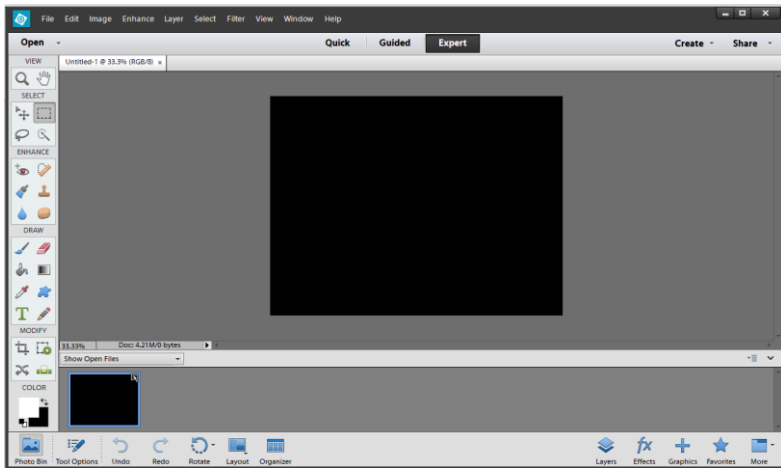
Everything you ever need to know about re-sizing....

Photoshop Elements

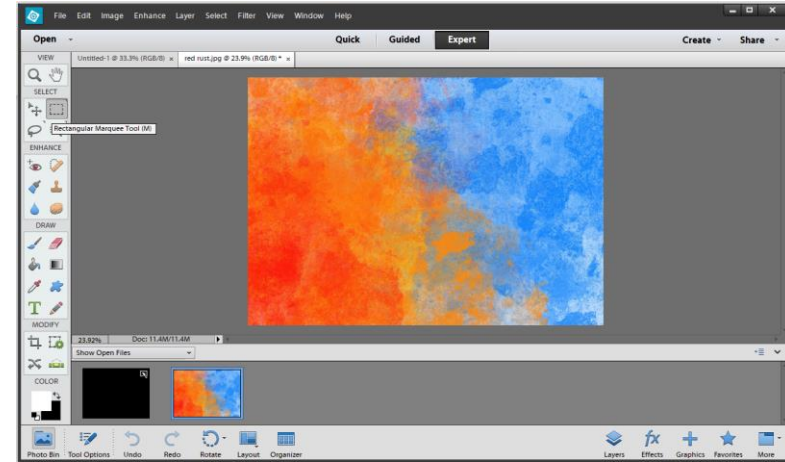
1) **File > New** to open a black canvas of the correct size (1400x1050)



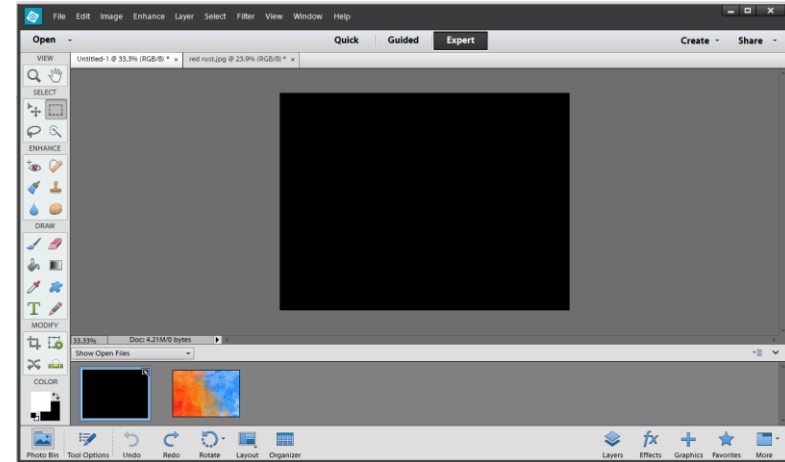
2) With the black canvas open, select **Photo Bin**



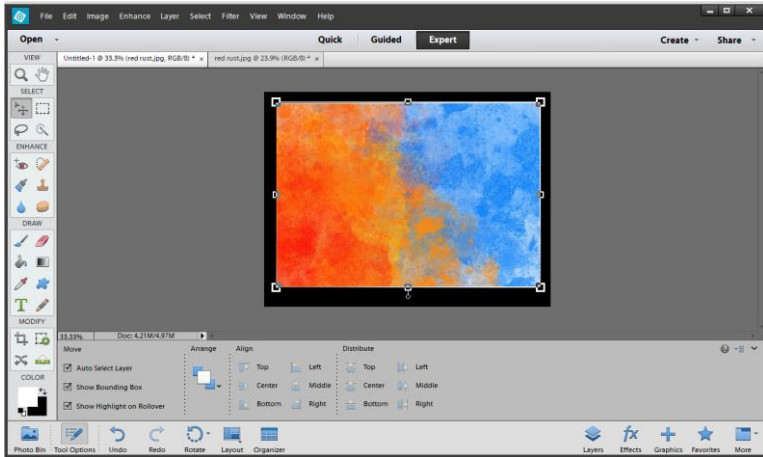
3) Now use **File > Open** to open the required image.



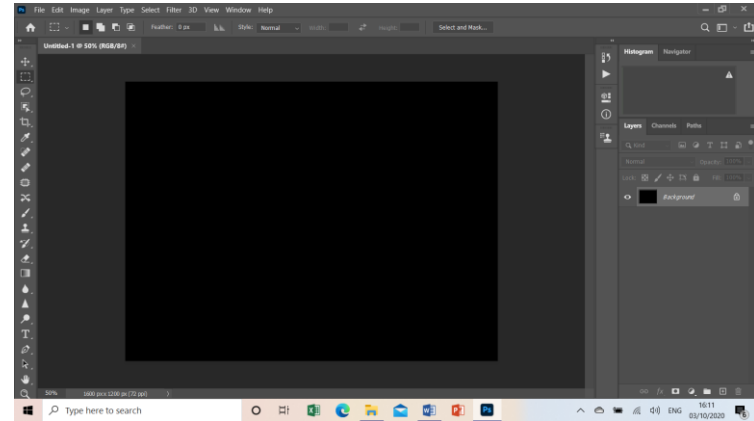
4) From the **Photo Bin**, select the black canvas.



- 5) Now Drag-and-drop with the left mouse button held down, to place the picture on top of the black canvas.



- 2) With the black canvas on screen:

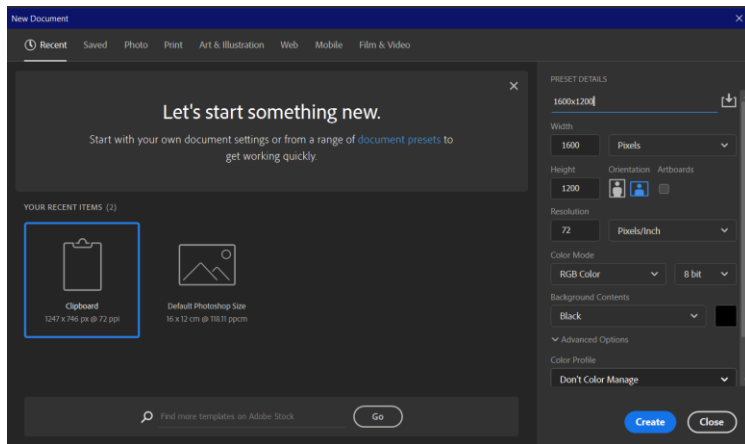


- 3) Now Drag-and-drop the picture to be re-sized from Windows Explorer (or Finder on the Mac) onto the canvas:



Photoshop CC

- 1) Select **File > New** to create a black canvas 1400 x 1050



- 4) Try adding a thin key-line using **Edit > Stroke**
5) Use **File > Export** to create a JPG file for entry into competitions.