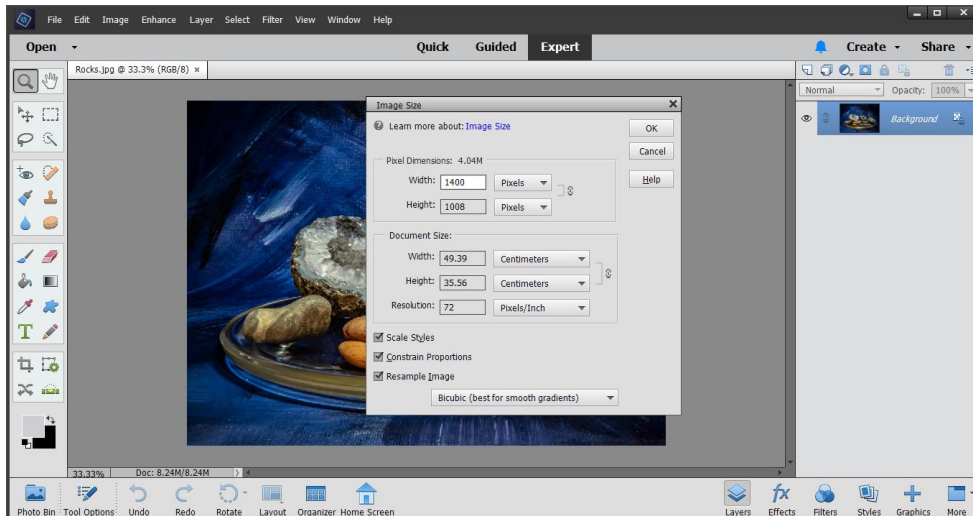


Resizing in Photoshop Elements (Method 1)

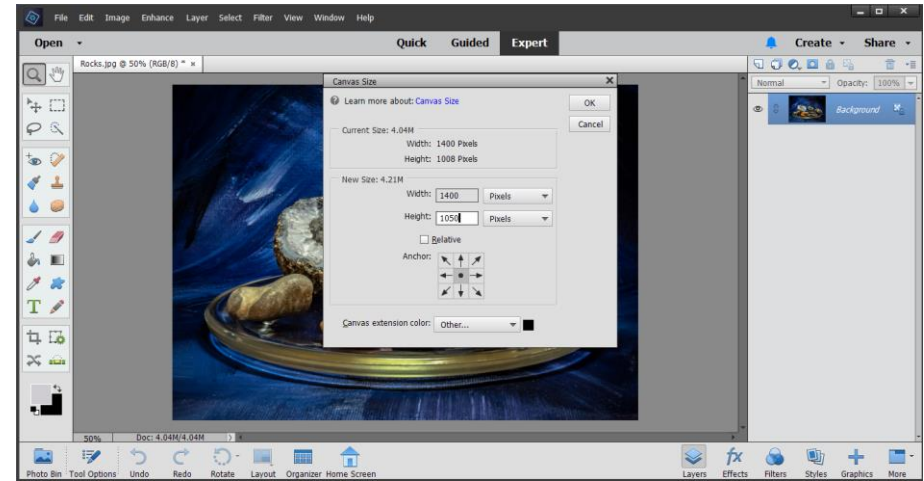
- 1) Use **File > Open** to open your image. We are going to resize it to 1400 x 1050.



- 2) Next, change the image size so that its largest dimension is either 1400 wide or 1050 tall, by selecting **Image > Resize... > Image Size**:



- 3) Next change the canvas size to 1400 x 1050, by selecting: **Image > Resize... > Canvas Size**:



Ensuring the **Anchor**: is set to the centre position and the **Canvas Extension colour** is set to black

