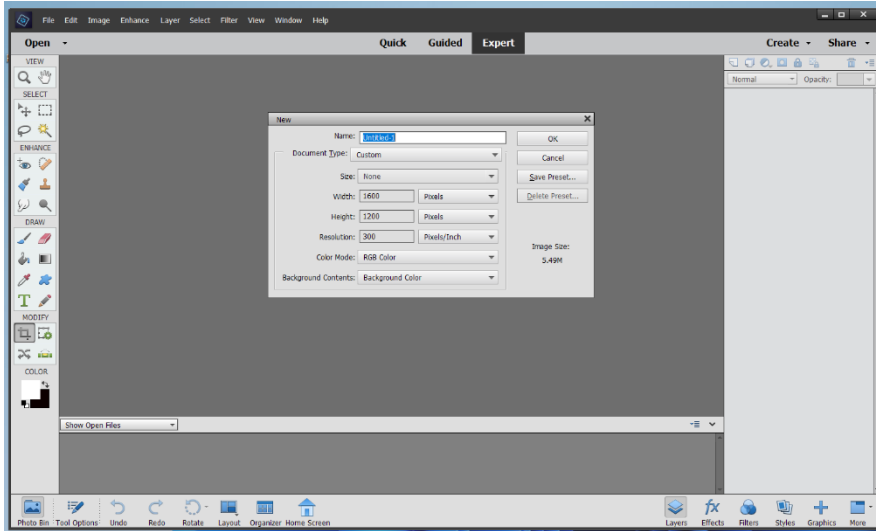


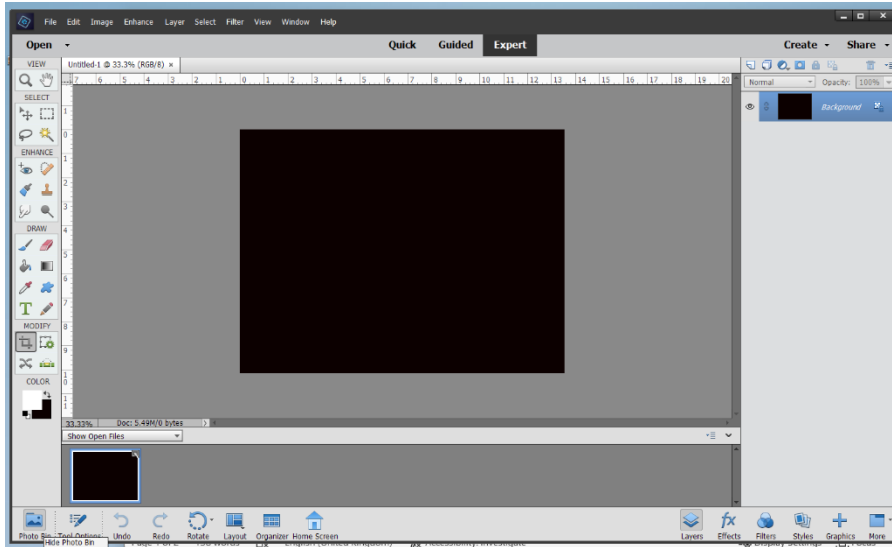
# Everything you ever need to know about re-sizing....

## Photoshop Elements

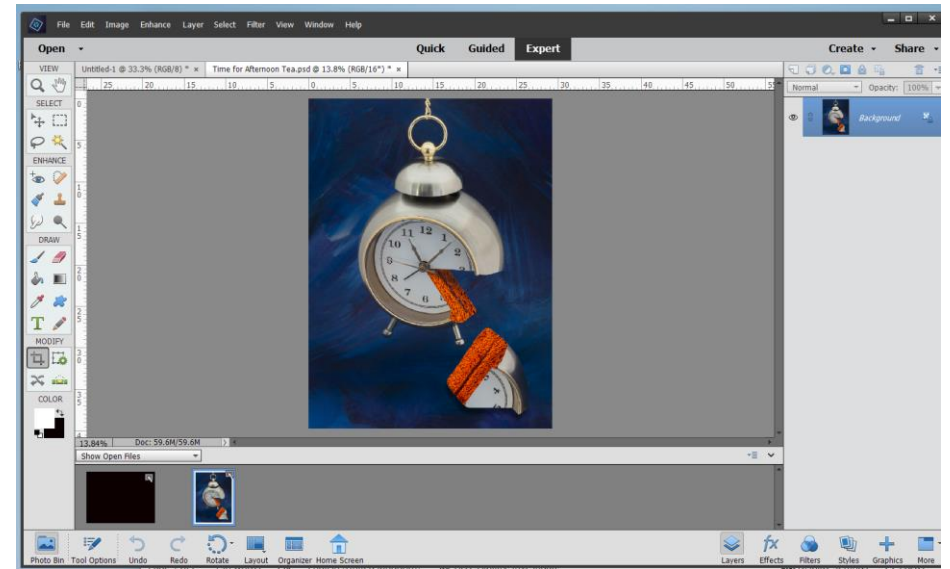
1) **File > New** to open a black canvas of the correct size (1600x1200)



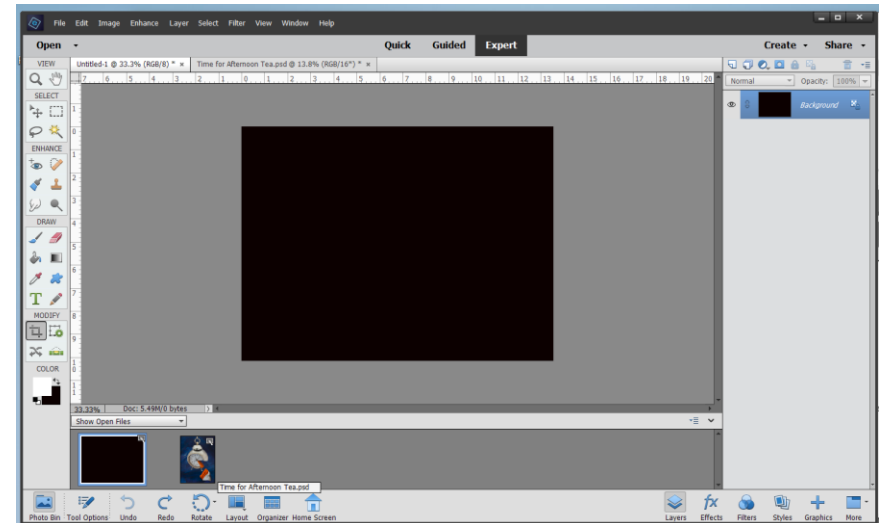
2) With the black canvas open, select **Photo Bin**



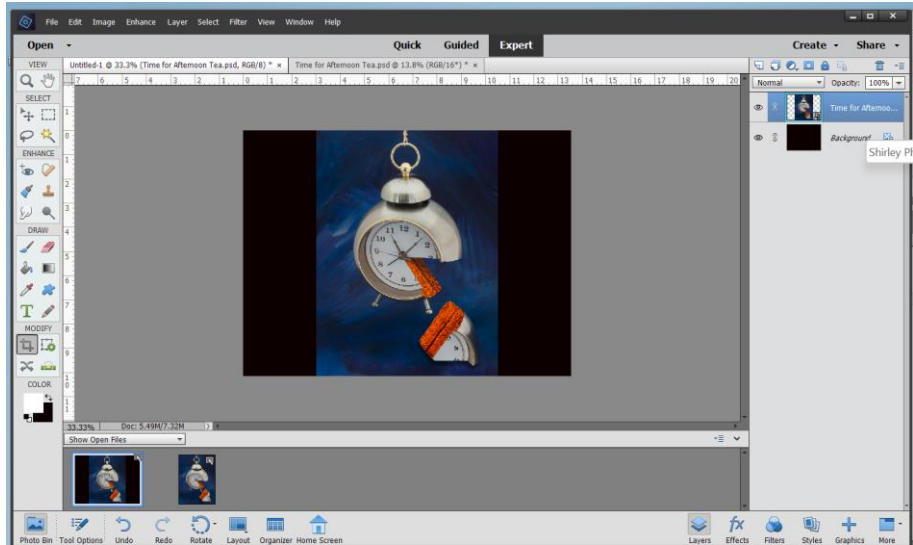
3) Now use **File > Open** to open the required image.



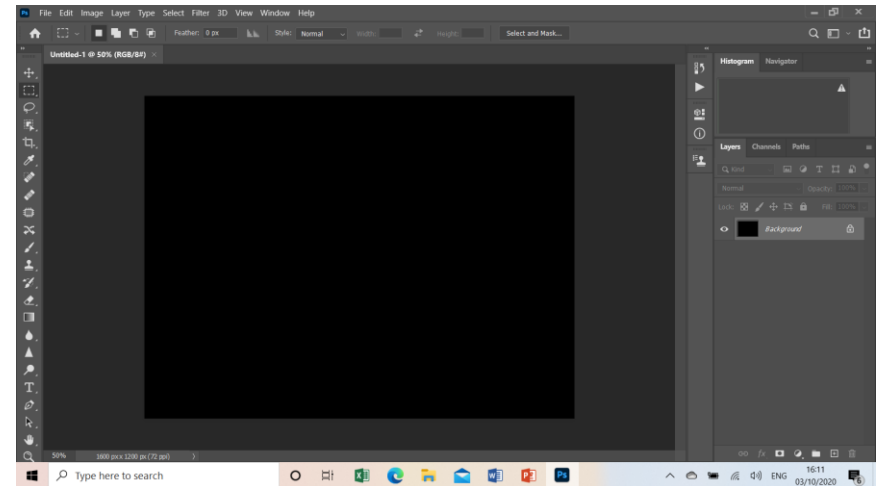
4) From the **Photo Bin**, select the black canvas.



- 5) Now Drag-and-drop with the left mouse button held down, to place the picture on top of the black canvas.



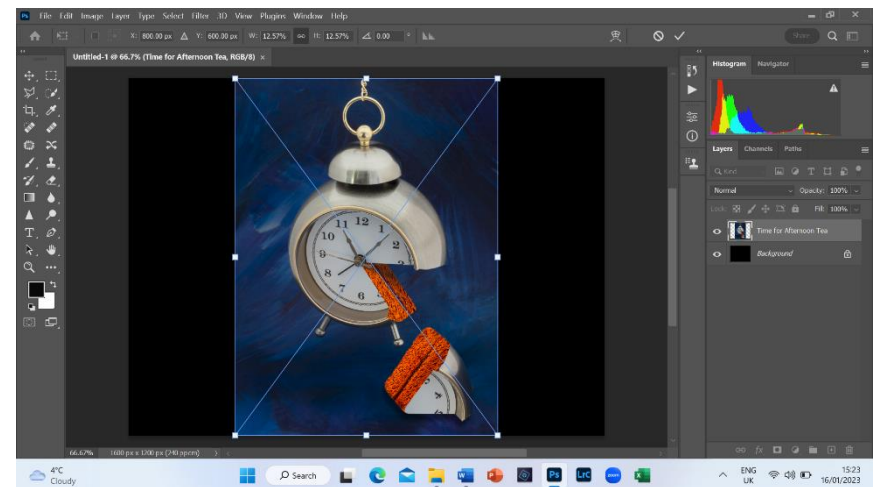
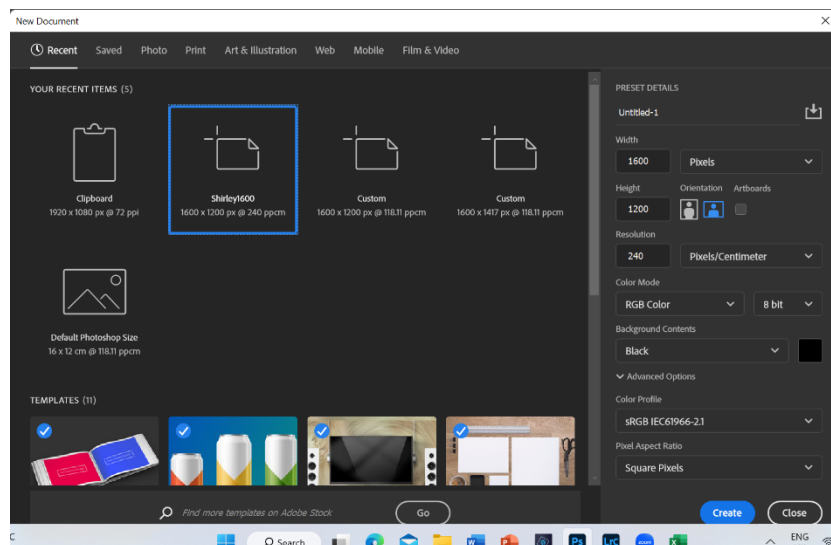
- 2) With the black canvas on screen:



- 3) Now Drag-and-drop the picture to be re-sized from Windows Explorer (or Finder on the Mac) onto the canvas:

## Photoshop CC

- 1) Select **File > New** to create a black canvas 1600 x 1200



- 4) Try adding a thin key-line using **Edit > Stroke**
- 5) Use **File > Export** to create a JPG file for entry into competitions.